

Standard Peristaltic Pump

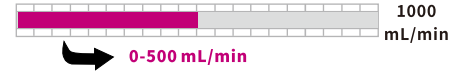
L100-1S-2



* Product L100-1S-1 (product code: 050241A) has same performance and parameters as L100-1S-2, but only can be controlled by keypad.

Speed	0.01rpm-100rpm, CW/CCW
Speed resolution	0.01rpm resolution within the speed of 0.01rpm-10rpm 0.1rpm resolution within the speed of 10rpm-100rpm
Display	LCD
Control mode	Keypad control, external signal control and communication control
Work mode	Speed control mode and flow rate mode
Flow rate mode	Flow rate is displayed and the pump runs continuously at the set flow rate
Flow rate calibration	Improve the flow rate accuracy
Flow rate setting range	0.01μL/min-999L/min, unit could be set as μL/min, mL/min or L/min
External control	Start/stop control (switch signal), direction control (switch signal), speed control (0-5V, 0-10V, 4-20mA, 0-10kHz are optional with uniform interface, from 0-10rpm in 0.01rpm resolution, from 10-100rpm in 0.1rpm resolution)
Communication control	RS485 interface, Longer protocol or Modbus protocol, the communication parameters (address, baud rate, parity, stop bit) can be set through keypad
Timing function	Set the running time (13 options), the pump could run/stop automatically
Parameter memory	Operating parameters will be saved automatically
Status when powered up	The pump status when powered up could be set as stop or as the status before power loss
Prime	Fast filling or emptying at full speed
Keypad lock function	Keypad can be locked to prevent the misoperation. The delay time before lock is settable.
Dimension(L×W×H)	232×142×149(mm)
Power supply	AC100V-240V/25W, 50/60Hz
Operating temperature	0 to 40°C
Relative humidity	<80%
IP rating	IP31
Weight	2.38kg

Flow Rate



Mainly designed for Laboratory and light industry applications. With precise speed control in 0.01rpm resolution (10000:1 turndown ratio), and flow rate calibration function, the pump has more accurate and wider range of flow rate. With the intelligent fan control, the pump has lower noise and better energy efficiency. LCD with specially designed run screen displays parameters and running status, which provides enough information for correct operation.

Pump Head Options



YZ1515x, YZ2515x



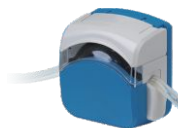
YZII15, YZII25



BZ15, BZ25



DMD15-13-B, DMD15-13-D



FG15-13, FG25-13



DG15-24, DG15-28



DG-1, DG-2, DG-4, DG-6, DG-8

LAB

PERISTALTIC PUMP

Model (Product code)	Pump head	Tubing	Flow Rate Reference	Weight (kg)
L100-1S-2 (05.02.42A)	Yz1515x, YZII15	13" 14" 19" 16" 25" 17" 18"	0.6μL/min - 380mL/min	2.78
	YZ2515x	15" 24"	16μL/min - 270mL/min	
	YZII25	15" 24" 35" 36"	16μL/min - 500mL/min	
	FG15-13	13" 14" 19" 16" 25" 17" 18"	0.5μL/min - 430mL/min	2.66
	FG25-13	15" 24"	22μL/min - 320mL/min	
	DMD15-13-B, DMD15-13-D	2×13" 2×14" 2×19" 2×16" 2×25"	2μL/min - 375mL/min	2.81
	BZ15-13-A	14"	3μL/min - 22mL/min	2.69
	BZ15-13-B	16"	8μL/min - 80mL/min	
	BZ15-13-C	25"	16μL/min - 150mL/min	
	BZ15-13-D	17"	27μL/min - 270mL/min	
	BZ25-13-B	24"	27μL/min - 250mL/min	
	DG15-24	16" 25" 17"	8μL/min - 300mL/min(Single channel)	3.2
	DG15-28	13" 14" ID≤3.17mm Wall Thickness 0.8-1mm	0.31μL/min - 75mL/min(Single channel)	3.05
	DG-(1,2,4,6,8) Rollers	ID≤3.17mm Wall Thickness 0.8-1mm	0.21μL/min - 48mL/min(Single channel)	2.58-3.01
DG-(1,2,4)10 Rollers	0.15μL/min - 32mL/min(Single channel)			

