



Flow Rate Peristaltic Pump

Model NO. : V6-6L/AMC24

Flow Rate : 0.0002-65mL/min



Product Introduction

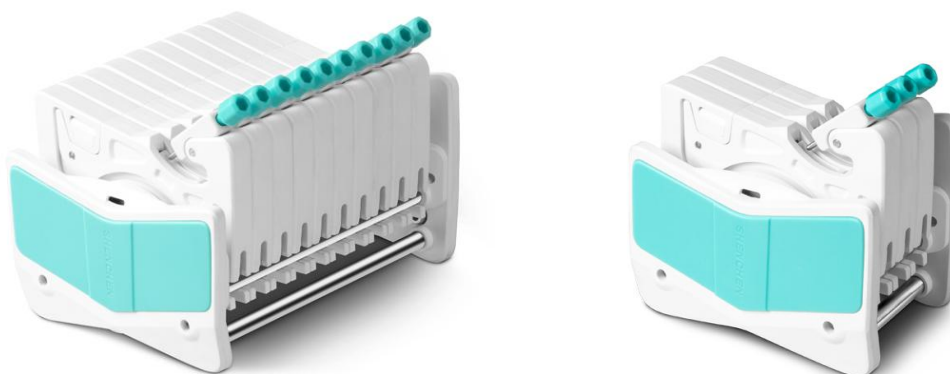
Intelligent flow rate type industrial peristaltic pump with serve motor drive, use 4.3 inch true color LCD display, touch screen control. Speed range: 0.1~150rpm/min, Flow rate: 0.0002-65mL/min; Dynamic display transferring state, flow rate data, setting parameters and system configuration in the same screen.Intelligent calibration and online micro adjusting function.Industry application: Transmission of industrial production,Pharmaceuticals,Industry of fine chemicals.

Product Features

Large flow rate, high precision, intelligent control of liquid transferring.
Closed-loop stepper motor drive, accurate control, strong driving force.
304 stainless steel housing, the first choice for high level industrial sites.



Pump Head



Product Composition and Flow Rate

Channel number	1	2	3	4	5	6	8	10	12
Cartridge material	POM/PVDF								
Rollers material	304 stainless steel material								
Rollers number	6 rollers, 10 rollers								

Tubing	Speed	Flow rate of pump head with 6 rollers (mL/min)	Flow rate of pump head with 10 rollers (mL/min)	Tubing maximum pressure (Mpa)	
				Continuous	Intermittent
1×1	0.1~150rpm	0.0062~9.36	0.0050~7.55	0.1	0.1
2×1		0.0220~33.06	0.0183~27.52		
2.4×0.8		0.0319~47.81	0.0254~38.13		
3×1		0.0434~65.17	0.0323~48.38		
0.13×0.86		0.0002~0.31	0.0002~0.29		
0.19×0.86		0.0003~0.46	0.0003~0.44		
0.25×0.86		0.0005~0.80	0.0005~0.76		
0.51×0.86		0.0014~2.05	0.0013~2.00		
0.89×0.86		0.0031~4.65	0.0030~4.47		
1.14×0.86		0.0065~9.74	0.0061~9.16		
1.42×0.86		0.0142~21.28	0.0125~18.75		
2.06×0.86		0.0234~35.17	0.0197~29.60		
2.79×0.86		0.0372~55.77	0.0286~42.86		

Screen Display

Real-time flow rate changeable by touching

Display area for setting parameter

Display area for dynamic working

Display area for running parameter

Function setting area changeable by touching

SHENCHEN V6-6L

2012/07/26 10:00 AM

12.50 mL/min

59.80 rpm

Volume 50.00 mL

Time 5.00 s

Current vol 0.00 mL

Fixed volume: Off

Dispensing: Off

Pump Head: 0225-6L

Tubing Size: 24#

Setting Calibration Date&Time

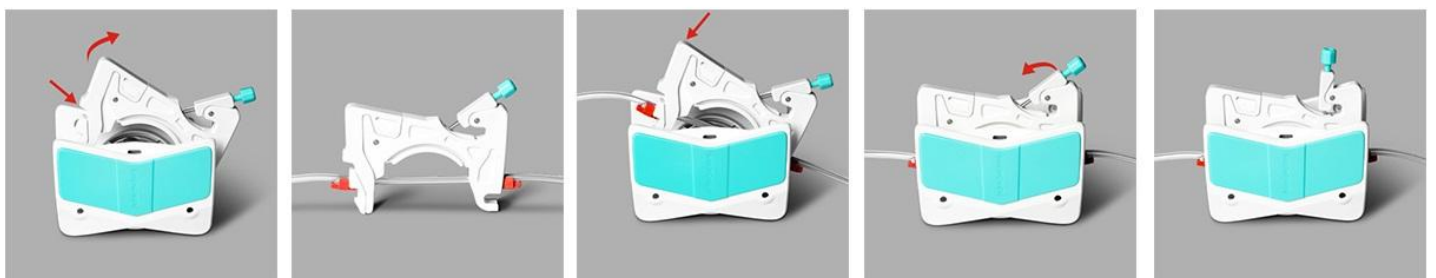
Volume Dispensing Timing

Fixed Volume Measurement Setting Interface

Fixed Time and Volume Setting Interface

Time Start and Stop Setting Interface

Tubing Installation Procedure



1. Easily press the elastic lock arm mechanism to open the cartridge.
2. After the cartridge is disconnected, install the tube, the two adjacent tube stoppers determine a working position.
3. Press the cartridge to make the cartridge enter the working position
4. pull the pressing device to enter the pressure tube state.
5. Installation finished.



Technical Specifications

Flow rate range	0.0002-65mL/min
Speed range	0.1-150 rpm
Speed resolution	0.01 rpm
Flow rate resolution	0.01 mL
Flow rate accuracy	<±0.5%
Back suction angle	0-360°
Motor type	Closed-loop stepper motor
Display	Industrial grade 4.3" color LCD display
Control method	Touch screen and Mechanical keypad
Keypad lifetime	300,000 times
External speed control signal	0-5V,0-10V,4-20mA
Start/stop,direction signal	Passive switch signal, such as foot pedal switch; Active switch signal: 5-24V universal
Communication interface	RS232, RS485 support MODBUS protocol(RTU mode)
Output interface	Output motor working status (Open-Collector output)
Power supply	AC 220V±10% 50Hz/60Hz (standard) AC 110V±10% 50Hz/60Hz (optional)
Drive dimension	283×192×274 mm
Drive weight	7.85kg
Power consumption	<180W
Environment temperature	0-40°C
Relative humidity	<80%

Dimension Drawing(Unit: mm)

